

Additional Value for Factory Automation Sensors

Displacement
Sensors



BGS/TOF Distance Setting Sensors



Laser Sensors



Photoelectric Sensors



Transparent-object
Detection Sensors



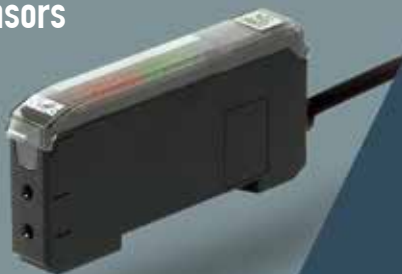
Color Mark Sensors



Communication Units



Fiber Sensors



Vision Sensors



Non-contact
Thermometers





Realize World's No. 1 Linearity : +/-0.015%F.S.

CDX Series



Web Server CDA amplifier

Model	Repeat accuracy	Measurement range*1	Reflection mode
CDX-L15A/LW15A	0.25 μm	15 +/-1 mm	Specular
CDX-30A/W30A	0.25 μm	30 +/-5 mm	Specular / Diffuse
CDX-85A/W85A	0.25 μm	85 +/-20 mm	Specular / Diffuse
CDX-150A/W150A	0.25 μm	150 +/-40 mm	Diffuse

*1: Value of diffuse installation

Small-sized, amplifier built-in sensors for wide range of measurement distances

CD33 Series



UQ1 I/F Unit

Model	Repeat accuracy	Measurement range*1	Reflection mode
CD33-L30*30*	2μm	30 +/-4 mm	Specular / Diffuse
CD33-L50*50*	5μm	50 +/-10 mm	Specular / Diffuse
CD33-L85*85*	10μm	85 +/-20 mm	Specular / Diffuse
CD33-120*	30μm	120 +/-60 mm	Diffuse
CD33-250*	75μm	250 +/-150 mm	Diffuse

*1: Value of diffuse installation

Compact, amplifier built-in sensors

CD22 Series



W17.8xD31 xH44.4mm CDA amplifier

Model	Repeat accuracy	Measurement range	Laser class
CD22-15*	1μm	15 +/-5 mm	Class 1
CD22-35*	6μm	35 +/-15 mm	Class 1
CD22-100*	20μm	100 +/-50 mm	Class 2



Flexible system building with 11 Sensor heads and a 3ch amplifier

CD5 Series

Specular / Diffuse UQ1 I/F Unit



Through-beam edge sensor for width and gap measurement

TD1 Series

W9.6xD21 xH61mm CDA amplifier



2-dimensional laser sensor for width and height measurement

LS Series

3 control outputs 1 analog output

Compact amplifier for data calculation, multiple outputs and network connectivity

CDA Series



Master / slave CD22 Sensor TD1 Sensor

Communication interface unit for Mitsubishi PLC

UQ1 Series



2 channels CD33 Sensor



Smallest Time-of-Flight sensors in the class

Laser

IO-Link

TOF-DL Series

- Display
- Analog Output
- 3 Control Outputs
- IO-Link

TOF-L Series

- Long distance

Sensing distance

TOF-DL



TOF-L



Minimum detectable height difference = 0.08 mm

Laser



BGS-HDL Series

- 0.08 mm GAP
- 2 Control Outputs

BGS-HL Series

- 0.08 mm GAP
- 1 control output

BGS-HLM Series

- 0.08 mm GAP
- SUS Housing
- 1 control output

Sensing distance

Short range



Middle range



Industry-standard laser BGS sensor

Laser



BGS-ZL Series

- 25.4mm screw pitch
- Low hysteresis

Sensing distance

Short range



Middle range



Diffuse reflective and Retro reflective models **Laser**

TOF-3V Series

- Retro reflective
- Diffuse reflective
- up to 20m

CMOS laser sensor with teaching functions **Laser**

BGS-DL Series

- Display
- Teaching

Laser Type with Potentiometer **Laser**

BGS-DL (Volume) Series

- up to 700mm

Industry-standard LED BGS sensor

BGS-Z Series

- 25.4mm screw pitch

Stainless steel housing for water and oil resistance **IP67g**

BGS-ZM Series

- 25.4mm screw pitch
- SUS Housing

Small-sized with elongated installation holes

BGS-S/2S Series

- BGS-S W10xD17.4xH28mm
- BGS-2S W11xD20xH31mm

Basic BGS sensors

BGS Series

- Low hysteresis

AC/DC power models

BGS-2V Series

- AC/DC and DC24V
- up to 1m
- Relay output

M18 cylindrical housing

BGS-C2 Series

- Metal Housing
- Plastic Housing



High-power amplifier-separate laser sensors

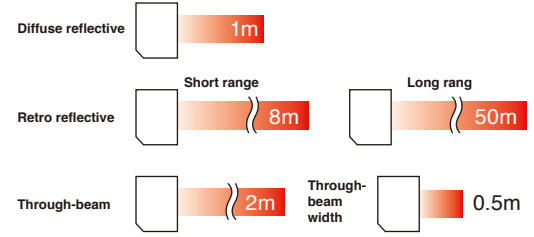
Laser



DS Series

- Coaxial
- 1 or 2 control outputs
- 4-20mA output
- Flexible Teaching
- Master/slave Max. 8 units

Sensing distance



Industry-standard Laser Sensors

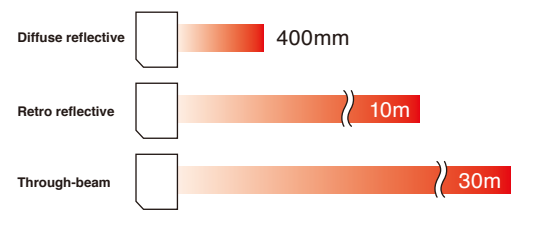
Laser



Z-L Series

- 25.4mm screw pitch
- 250µs

Sensing distance



IO-Link supported LED sensors

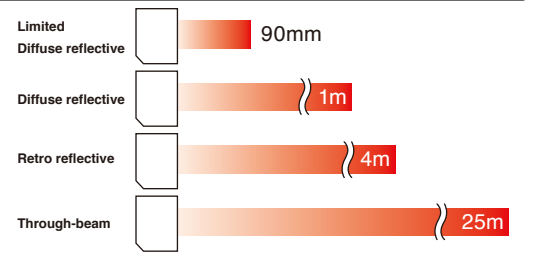
IO-Link



Z4 Series

- IO-Link
- NPN PNP output

Sensing distance



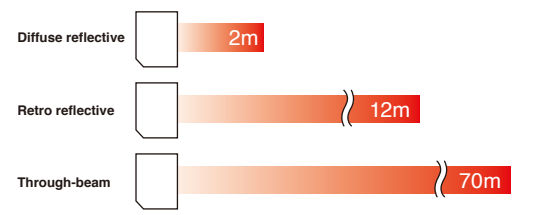
Universal power input sensors with terminal blocks



V3/V4 Series

- AC/DC and DC24V
- Relay output
- Terminal block

Sensing distance



High performance and wide range of line-up

Z3 Series

- Limited diffuse
- Wide diffuse
- Diffuse reflective
- Retro reflective
- Through-beam



Standard LED sensors

Z2 Series

- Diffuse reflective
- Retro reflective
- Through-beam



Stainless steel housing for water and oil resistance

Z-M Series

IP67g

- Diffuse reflective
- Retro reflective
- Through-beam



M18 cylindrical metal housing

C-R Series

Infrared

- Limited diffuse
- Diffuse reflective
- Retro reflective
- Through-beam



M18 cylindrical metal and plastic housing

C2 Series

Infrared

- Limited diffuse
- Diffuse reflective
- Retro reflective
- Through-beam



Miniature Flat On/Side On Sensors

E Series

- Flat On / Side On
- Limited diffuse
- Diffuse reflective
- Through-beam



Resin-filled environmental resistant sensors

J Series

Infrared

- Head On / Side On
- Limited diffuse
- Wide diffuse
- Diffuse reflective
- Retro reflective
- Through-beam



Small-sized sensors

S Series

- Diffuse reflective
- Retro reflective
- Through-beam
- W10xD17.4 xH28mm



AC/DC power models

V/V2 Series

Infrared

- AC/DC / DC power
- Diffuse reflective
- Terminal block
- Retro reflective
- Through-beam
- Relay output



Laser

High power laser sensors with flexible adjustability



DR-Q Series

Coaxial retro reflective

Digital teaching

Sensing distance

Coaxial retro reflective



Long-time seller with a wide range of detection distances



KR-Q Series

Wide / Pin spots

Retro reflective

500mm

1.5m

2.5m

Small-sized sensors

SR-Q Series

Wide spots

Retro reflective

W10×D17.4×H28mm

300mm



High-performance coaxial sensors

ZR-QX Series

Coaxial retro reflective

2m



Standard transparent-object detection sensors

Z3R-Q Series

Retro reflective

2m



RGB LED color mark sensor

DM Series

Digital teaching

Color / Mark mode

8 banks

18+/-2mm



Fiber sensor amplifier with white LED light

D3WF Series

Master / slave Max. 16 units

UC1 UC2

62mm



Field network communication units



UC1-CL11 **CC-Link**

UC1-EC **EtherCAT**

UC1-EP **EtherNet/IP**

Slave adapter

Max. 16 devices

CDA amplifier

D3RF/D3WF Sensors

Compact IO-Link master unit

UR-MS16DT

IO-Link

16 channels

Input/Output

IO-Link / NPN / PNP

Online setting



CC-Link **IE TSN**
CC-Link **IE Field**

IO-Link gateway for fiber sensors and displacement sensor amplifiers

UC2-IOL

IO-Link

Max. 16 devices

D3RF/D3WF Sensors

CDA amplifier





Fiber Sensor Amplifier

High performance with a wide range of line-up



D3RF Series

- Stand-alone
- Master / slave Max. 16 units
- 1ch / 2ch outputs
- Digital teaching
- Up to 16µs
- UC1 UC2



Durable IP66 and analog-output models



D2RF Series

- Stand-alone
- Master / slave Max. 8 units
- 1ch / 2ch outputs
- Digital teaching
- 4-20mA output
- IP66 model
- Up to 60µs

High usability with digital teaching and IP66 protection



D1RF Series

- Stand-alone
- Up to 50µs

Easy teaching with sensitivity indicator



V2RF Series

- Stand-alone
- 250µs

Digital teaching for mark detection



D2GF Series

- Master / slave
- Up to 60µs

Green LED

Potentiometer adjustment for mark detection



BGF Series

- Stand-alone
- 250µs

Green LED

Infrared light source for water detection



D3IF Series

- Stand-alone
- Up to 16µs

Infrared

Basic potentiometer models



BRF Series

- Stand-alone
- 50µs / 250µs

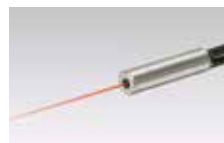
Fiber Units



Easy mounting



Thread



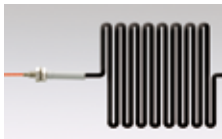
Cylindrical



Sleeve (straight view)



Sleeve (side view)



Flexible R1



Flexible R2



Flex resistance R4/R2



Retro-reflective



Screen/Array



Limited diffuse reflective



Narrow view / wafer mapping



Small object detection



Lens for through-beam



Chemical resistant



Heat resistant (130°C or below)



Heat resistant (180 to 200°C)



Heat resistant (250 to 350°C)



Liquid level / leakage



Water detection



Installation Models

Compact sensor head for flexible installation

IP69K



CS Series

Measurement range

-40~500°C / -40~932°F 0~1000°C / 32~1832°F

Heat resistance

0~100°C / 32~212°F 0~180°C / 32~356°F

4~20mA output

2 × C Contact

M18 cylindrical models

IP67

SA-80 Series

Measurement range

0~200°C / 32~392°F 0~400°C / 32~752°F

Heat resistance

0~70°C / 32~158°F

4~20mA output



All-in-one models

IP65

BA Series

Measurement range

0~500°C / 32~932°F

Heat resistance

0~50°C / 32~122°F

4~20mA output

1mV/°C output



Separate models

IP67

BS Series

Measurement range

0~500°C / 32~932°F

Heat resistance

0~50°C / 32~122°F 0~150°C / 32~302°F

4~20mA output

1mV/°C output



*with optional cooling jacket

Hand-held Models

Wide Measurement Range

PT-2LD

Measurement range

-40~510°C / -40~950°F



PT-5LD

Waterproof, Shock Resistant

PT-5LD/7LD

Measurement range

PT-5LD 0~500°C / 32~932°F

PT-7LD -30~200°C / -22~392°F

PT-7LD



Long Range with Narrow FOV

PT-S80/U80

Measurement range

-30~600°C / -22~1112°F

PT-U80-USB I/F
Data memory



Multiple-camera vision sensor systems with a separate controller

MVS Series

MVS-EM-R : Edge Measurement

MVS-OCR2 : Optical Character Recognition

MVS-PM-R : Color Pattern Matching

Max. 3 cameras

4.3" display

Touch operation

Lighting control

NPN/PNP x 6

Ethernet

USB



All-in-one vision sensors with camera, lighting, monitor and controller

CVS Series

CVSE1 : Easy Setup Color Matching

CVS1 : Color Matching

CVS2 : Color Pattern Matching

CVS3 : Edge Matching

CVS4 : Optical Character Recognition

Multiple viewing areas

NPN/PNP x 2

W42×D33.8 ×H95mm

External lighting & monitor

IP67



CVSE1



CVS1



CVS2



CVS3



CVS4



Global Sales Network

China

Guangzhou OPTEX Industrial Automation Control Equipment Co., Ltd.

A1 10F04, No.280, Hanxi Road East,
Panyu District, Guangzhou,
Guangdong, P.R.CHINA

TEL : +86-20-39922102
FAX : +86-20-39922107
<http://www.optex-fa.cn/>



U.S.A.

OPTEX FA INC.

1701 E. Woodfield Rd. Suite 635,
Schaumburg,
Illinois 60173, U.S.A.

TEL : +1-847-565-3500
Toll-Free (US) : +1-877-771-7788
ofi-sales@optexfa-america.com



Thailand

OPTEX (Thailand) Co., Ltd.

90 CW Tower (Tower B) Unit B1702
17 Floor, Ratchadaphisek Rd., Huai Khwang
Bangkok 10310
THAILAND

TEL : +66-2-168-3162
<https://optex.co.th/>
thailand@optex-fa.com



Japan

OPTEX FA CO., LTD.

91 Chudoji-Awata-cho
Shimogyo-ku
Kyoto 600-8815 JAPAN

TEL : +81-75-325-1314
FAX : +81-75-325-2936
<https://www.optex-fa.com>
faovs@optex-fa.com



FASTUS
Good Thinking, Good Future

*FASTUS is a product brand of OPTEX FA.

TOE

TOKYO OPTO-ELECTRONICS CO., LTD.



A Group Company of OPTEX FA.



226 Soi Happyland Center 1, Klongchan, Bangkok, Bangkok 10240
Tel: (662) 733 7702 (Auto) Fax: (662) 733 7703
Email : info@jwtech.co.th

OPTEX FA **OPTEX FA CO., LTD.**

91 Chudoji-Awata-cho Shimogyo-ku Kyoto 600-8815 JAPAN
TEL. +81-(0)75-325-1314 FAX. +81-(0)75-325-2936
<https://www.optex-fa.com>